

**A.J. Broom Road Products cc**

The sole manufacturers and distributors  
of a unique range of

**Prefabricated bitumen rubber bound seals.**



**Road Maintenance**



**Sealing Utility Repairs**



**Bridge Maintenance**



**Traffic Calming**

**Key Benefits:**

- ❖ Application is simple
- ❖ Reduces overall cost of maintenance
- ❖ No expensive tools or machinery required
- ❖ Consistent in quality, eliminating traditional rework
- ❖ Waterproof seal with the flexibility of bitumen rubber







### Road Maintenance

The BRP Road Patch can be cut to size. Pieces can be butted together ensuring zero wastage



#### Early Intervention

Early intervention with a proven seal will result in safer roads and cost savings.



#### BRP Road Patch

By sealing off the defects using a waterproof seal, the repaired area is guaranteed longevity. Sealing 100mm beyond any visible defects eliminates perimeter cracking and hidden stress cracks, ultimately reducing the possibility of rework.



- ❖ Optimal intervention strategy achievable at minimal cost.
- ❖ Flexible bitumen rubber seal prevents the ingress of water and the spread of deterioration
- ❖ 10 year storage life ensures staff sealing capability 24/7
- ❖ Matching texture improves pre-reseal repairs



### Sealing Utility Repairs Improved efficiency



#### Typical Failure Around Manholes

These can be sealed off quickly using the BRP Road Patch.



#### Size and Shape

Sheets are easily cut to desired shape or size with a Stanley knife or similar.



#### Eliminates Stress Cracking

The BRP Road Patch is an ideal sealing option where flexible pavements meet inflexible structures.

- ❖ Reduced client monitoring costs
- ❖ Clean and easy installation methodology
- ❖ Eliminates stress cracking around manholes
- ❖ No expensive tools or machinery required for all applications
- ❖ Easy handling

### Product Benefits:

- ❖ The prefabricated format ensures 24/7 availability.
- ❖ Easy to handle, 750mm x 1000mm sheet size, cuts to size per specification
- ❖ Sheets can easily be butted together for large areas.
- ❖ Products provide flexible, waterproof solutions.
- ❖ Various aggregate sizes available to match existing surfaces.
- ❖ Adheres to various surfaces such as timber, steel and concrete.
- ❖ Traffic is open immediately after installation.
- ❖ Products can be stored for  $\pm$  10 years.



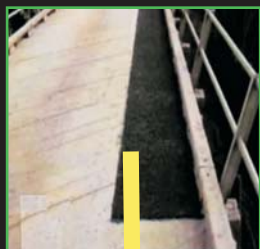


## Bridge Maintenance BRP Road Patch can be used on various surfaces



### Bridge Joints

The BRP Road Patch provides a cost - effective solution for constructing and waterproofing bridge bridge joints.



### Deck Sealing

The resilience of the bitumen rubber provides a durable binder for flexible structures i.e. timber decks, vehicle and pedestrian bridges.



### Minimal Disruption

Installation is quick and offers an inexpensive solution to deck sealing with minimal disruption to traffic.



## Traffic Calming Ensuring affordable road safety for all



### BRP Rumble Strips

Provide an audible and vibratory traffic calming effect which increases driver awareness of approaching hazards.



### BRP Rumble Humps

BRP Rumble Humps are of a rounded profile, low in height and are designed and placed in such a manner that encourages the motorist to travel at the signed speed. Modifications of the standard designs in height, width and frequency are possible for specified locations.



### Equipment Needed

- ❖ Emulsion - KRS / CAT 65 or SS60 or Local Equivalent
- ❖ Bucket
- ❖ Long handled broom
- ❖ Short handled broom
- ❖ Stanley Knife
- ❖ Chalk
- ❖ BRP Quickfill - As backfill material for pothole repairs or alternative quality backfill material

### Neatly stacked for transportation and Storage



## Simple Installation Procedure which requires minimal labour and tools



Sweep all loose particles from area. Demarcate 100mm beyond any visible defects.



Evenly apply emulsion to the demarcated area and to the back of the BRP Road Patch.



Wait for emulsion to break, i.e. turn from brown to black. Place the BRP Road Patch onto emulsion treated area.



Apply a small quantity of emulsion to edges and joints. Blind edges and joints with crusher dust or sand.



Drive over the BRP Road Patch with construction vehicle on site. Several passes are recommended. Open to traffic immediately.



## BRP Roding Solutions in Action:



Economic solution to extending kerbs.



Cattle Grids in various states of disrepair can be repaired using the BRP Road Patch.



Crack Sealing repairs over a wide area.



Application Procedures are easy to learn, promoting job creation across board irrespective of gender



The BRP Road Patch can be layered for unique applications such as BRP Rumble Humps



## About A.J. Broom Road Products:

Motivated by the need to improve road maintenance standards (addressing the issues of ingress of water, perimeter cracking and non-flexible surfacing materials) through the use of innovative and cost effective prefabricated products, Angela Broom introduced the BRP Road Patch in 1986. Continued research and development has seen the introduction of traffic calming and road safety products, for instance, BRP Rumble Humps and BRP Rumble Strips. Angela Introduced the BRP range of products into Australasia by establishing A.J. Broom Road Products NZ Ltd in 2008.

## Contact us:

### A.J Broom Road Products cc

Telephone:	+27 (0) 11 454 3102
Fax:	+27 (0) 11 454 2790
Mobile:	+27 83 605 1100 (Stephen Broom)
Email:	<a href="mailto:ajbroom@icon.co.za">ajbroom@icon.co.za</a>
Website:	<a href="http://www.brp.co.za">www.brp.co.za</a>